

BLACKBURNS
METALS LIMITED

Structural & Decorative Tube Bar & Sections Seamless Tube Hygienic Tube Structural & Decorative Tube Aluminium Butt Weld Fittings Hygienic Fittings Architectural Stainless Steel Rolled Products Mirror Polished Fittings Setting Industry Standards MIC 6 Rolled Products Stainless Steel Welded Mesh Seamless Pipe Welded Pipe Brass Seamless Butt Weld Fittings Welded Butt Weld Fittings Yellow Metals Fittings Seamless Butt Weld Fittings Stainless Steel Copper Structural & Decorative Tube Hygienic Tube Sign & Display Materials Seamless Tube Hygienic Tube Glazing Bar Flanges Fittings Rolled Products Nationwide Supply Solutions Welded Pipe Circle Polish Welded Mesh Polish MIC 6 Butt Weld Fittings Bar **Fixtures & Fittings Section...** Seamless Butt Weld Fittings Welded Pipe Welded Butt Weld Fittings Flanges Seamless Tube Mirror Polish Fixtures & Fittings Hygienic Tube Stainless Steel Nationwide Supply Solutions Hygienic Fittings The Perfect Choice Bar & Sections Yellow Metals Welded Mesh Mirror Polish Aluminium Circle Polish Architectural Rolled Products Seamless Pipe Bronze Seamless Butt Weld Fittings Welded Butt Weld Fittings Welded Pipe Flanges Seamless Tube Circle Polish Hygienic Tube Mirror Polish Glazing Bar Structural & Decorative Tube Brass Sign & Display Materials Seamless Tube Hygienic Tube Bar & Sections Butt Weld Fittings Seamless Tube Flanges Hygienic Fittings Fittings Rolled Products Welded Pipe Circle Polish Mirror Polished Bronze MIC 6 Nationwide Supply Solutions Fixtures & Fittings Copper Bar & Sections Seamless Tube Hygienic Tube Structural & Decorative Tube Aluminium Butt Weld Fittings Hygienic Fittings Architectural Stainless Steel Rolled Products Mirror Polished Fittings Setting Industry Standards MIC 6 Rolled Products Stainless Steel Welded Mesh Seamless Pipe Welded Pipe Brass Seamless Butt Weld Fittings Welded Butt Weld Fittings



Blackburns Fixtures & Fittings...

CROSINOX - Stainless steel modular system...

Blackburns Metals has recently extended its stock of stainless steel architectural products to include the Crosinox range of stainless steel fixtures and fittings, including the complete range of handrail fittings. The extensive Crosinox range is available in grades 304 and 316 with a 240 grit satin polish as standard. Full details including installation instructions are available on www.crosinox.com or contact your local Blackburns for further information.

TUBES & BARS	120
GLASS CLAMPS	122
END CAPS	126
FLOOR MOUNTING	128
SIDE MOUNTING	130
HANDRAIL BRACKETS	132
ACCESSORIES	135
HANDRAIL HOLDERS	136
CROSSBAR HOLDERS	137
FITTINGS	138
WOODLINE FITTINGS	142
SLOTTED TUBE	144

✓ *Blue item = Exstock UK*

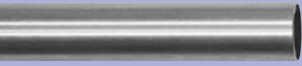
Red item = Special Order

Delivery 7-10 days subject to availability

Contact your **local** Blackburns today...

(see back cover for location and contact details)

Tube



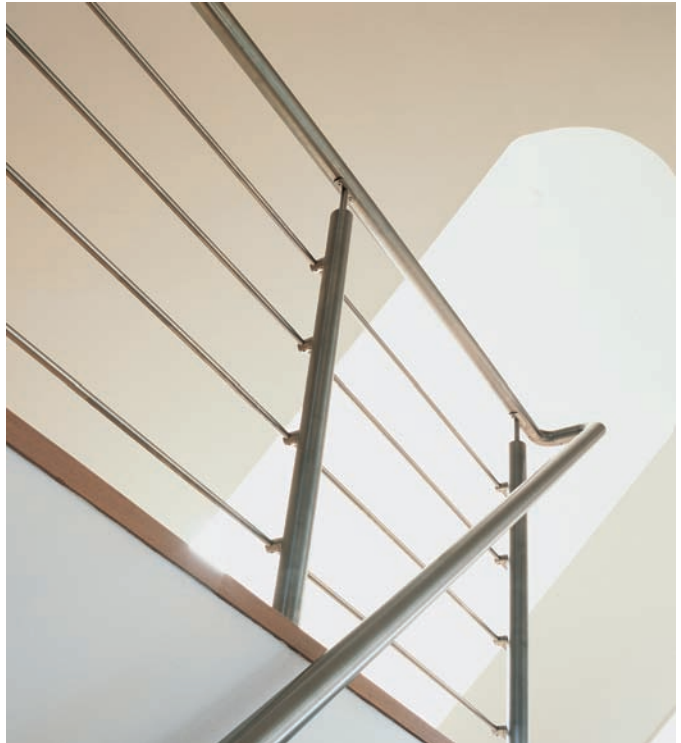
Item No.	Material	Dimensions Ø
E001	AISI 304	42.4 x 2mm L=3000
✓ E001/6	AISI 304	42.4 x 2mm L=6000
E001/S	AISI 316	42.4 x 2mm L=3000
✓ E001/6/S	AISI 316	42.4 x 2mm L=6000
E0012	AISI 304	48.3 x 2mm L=3000
✓ E0012/6	AISI 304	48.3 x 2mm L=6000
E0012/S	AISI 316	48.3 x 2mm L=3000
✓ E0012/6/S	AISI 316	48.3 x 2mm L=6000

Solid Bar



Item No.	Material	Dimensions Ø
E005	AISI 304	12mm L=3000
✓ E005/6	AISI 304	12mm L=6000
E005/S	AISI 316	12mm L=3000
✓ E005/6/S	AISI 316	12mm L=6000

All items in stock are also available with a 2.5mm wall



Item No.	Material	Dimensions Ø
E002	AISI 304	42.4 x 800mm
E002/S	AISI 316	42.4 x 800mm
E002/48	AISI 304	48.3 x 800mm
E002/48/S	AISI 316	48.3 x 800mm



Tube

PRE-DRILLED WITH
4 HOLES, TO SUIT
CROSS BAR HOLDERS
(M5 HOLE)

Item No.	Material	Dimensions Ø
E003	AISI 304	42.4 x 900mm
E003/S	AISI 316	42.4 x 900mm
E003/48	AISI 304	48.3 x 900mm
E003/48/S	AISI 316	48.3 x 900mm



Tube

PRE-DRILLED WITH
5 HOLES, TO SUIT
CROSS BAR HOLDERS
(M5 HOLE)

Item No.	Material	Dimensions Ø
E004	AISI 304	42.4 x 900mm
E004/S	AISI 316	42.4 x 900mm
E004/48	AISI 304	48.3 x 900mm
E004/48/S	AISI 316	48.3 x 900mm



Tube

PRE-DRILLED WITH
6 HOLES, TO SUIT
CROSS BAR HOLDERS
(M5 HOLE)

Item No.	Material	Dimensions Ø
E03/1	AISI 304	42.4 x 900mm
E03/1/S	AISI 316	42.4 x 900mm
E03/1/48	AISI 304	48.3 x 900mm
E03/1/48/S	AISI 316	48.3 x 900mm



Tube

PRE-DRILLED WITH
2 HOLES, SINGLE SIDE,
TO SUIT CROSS BAR
HOLDERS (M8 HOLE)

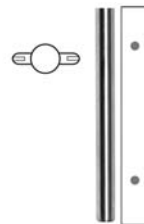
Item No.	Material	Dimensions Ø
E03/2	AISI 304	42.4 x 900mm
E03/2/S	AISI 316	42.4 x 900mm
E03/2/48	AISI 304	48.3 x 900mm
E03/2/48/S	AISI 316	48.3 x 900mm



Tube

PRE-DRILLED WITH
4 HOLES, 90°,
TO SUIT CROSS BAR
HOLDERS (M8 HOLE)

Item No.	Material	Dimensions Ø
E03/3	AISI 304	42.4 x 900mm
E03/3/S	AISI 316	42.4 x 900mm
E03/3/48	AISI 304	48.3 x 900mm
E03/3/48/S	AISI 316	48.3 x 900mm



Tube

PRE-DRILLED WITH
2 HOLES, IN LINE,
TO SUIT CROSS BAR
HOLDERS (M8 HOLE)

Zinc Glass Clamp

FOR 8mm, 8.75mm, 10mm

* ONLY 6mm - 8mm

** 10.76mm - 12.76mm



Item No.	Application	Material	Dimensions
E00740	flat back	Zinc	43 x 59mm
E00741*	flat back	Zinc	38 x 49mm
E00743*	flat back	Zinc	38 x 49mm
E007401	for tube Ø 42.4mm	Zinc	43 x 59mm
E007402	for tube Ø 48.3mm	Zinc	43 x 59mm
E007403**	flat back	Zinc	43 x 59mm
E007405**	for tube Ø 48.3mm	Zinc	43 x 59mm

Zinc Glass Clamp

FOR 8mm, 10mm

* ONLY 6mm - 8mm



Item No.	Application	Material	Dimensions
E00760	for tube Ø 42.4mm	Zinc	55 x 55mm
E00761	for tube Ø 48.3mm	Zinc	55 x 55mm
E00762	flat back	Zinc	55 x 55mm
E00766*	for tube Ø 42.4mm	Zinc	43 x 43mm
E00767*	for tube Ø 48.3mm	Zinc	43 x 43mm
E00768*	flat back	Zinc	43 x 43mm

Stainless Steel Glass Clamp

FOR 8mm, 10mm



Item No.	Application	Material	Dimensions
E0093	flat back	AISI 316	53 x 53mm
E0092	for tube Ø 42.4mm	AISI 316	53 x 53mm
E00921	for tube Ø 48.3mm	AISI 316	43 x 43mm
E00931	flat back	AISI 316	43 x 43mm

Item No.	Application	Material	Dimensions
✓ E00982	for tube Ø 48.3mm	AISI 316	55 x 55mm
✓ E00983	flat back	AISI 316	55 x 55mm

Item No.	Application	Material	Dimensions
✓ E009	for tube Ø 42.4mm	AISI 316	43 x 59mm
✓ E0090	for tube Ø 48.3mm	AISI 316	43 x 59mm
E00912	for tube Ø 42.4mm	AISI 316	38 x 49mm
E0090/HP**	for tube Ø 42.4mm	AISI 316	43 x 59mm
E00912/HP**	for tube Ø 48.3mm	AISI 316	43 x 59mm

Item No.	Application	Material	Dimensions
✓ E0091	flat back	AISI 316	43 x 59mm
E00911	flat back	AISI 316	38 x 49mm
✓ E00973*	flat back	AISI 316	53 x 64mm
E0091/HP**	flat back	AISI 316	43 x 59mm
E00911/HP**	flat back	AISI 316	38 x 49mm

Stainless Finish Glass Clamp

FOR 10.76mm - 12.76mm



Stainless Steel Glass Clamp

FOR 6mm, 8mm

8.75mm, 10mm GLASS

** MIRROR POLISHED



Stainless Steel Glass Clamp

FOR 8mm, 8.75mm

10mm GLASS

* 10.76mm - 12.76mm

** MIRROR POLISHED

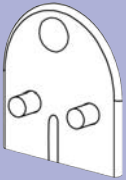


Stainless Steel Glass Clamp

FOR 8mm, 8.75mm
10mm GLASS

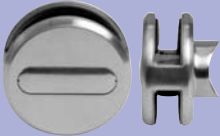


6mm Rubber Insert



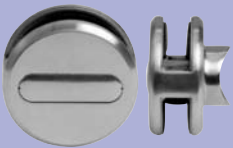
Glass Clamp

FOR 8mm, 10mm
10.76mm GLASS



Glass Clamp

FOR 12mm - 12.76mm
GLASS



Item No.	Material	For
DS01/M6	AISI 304	M6
DS01/M6/S	AISI 316	M6
DS01/M8	AISI 304	M8
DS01/M6/S	AISI 316	M8

Item No.	Application	Dimension
EG/L	For Series E 00911	6mm
EG/S	For Series E 0091	6mm

Item No.	Application	Material	Dimensions Ø
E00990	flat back	AISI 316	60 x 35mm
E00991	for tube Ø 42.4mm	AISI 316	60 x 35mm
E00992	for tube Ø 48.3mm	AISI 316	60 x 35mm

Item No.	Application	Material	Dimensions Ø
E00993	flat back	AISI 316	60 x 35mm
E00994	for tube Ø 42.4mm	AISI 316	60 x 35mm
E00995	for tube Ø 48.3mm	AISI 316	60 x 35mm

Item No.	Application	Material	Dimensions Ø
E00996	flat back	AISI 316	60 x 35mm
E00997	for tube Ø 42.4mm	AISI 316	60 x 35mm
E00998	for tube Ø 48.3mm	AISI 316	60 x 35mm

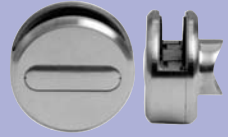
Item No.	Application	Material	Dimensions Ø
E00999	flat back	AISI 316	60 x 35mm
E01000	for tube Ø 42.4mm	AISI 316	60 x 35mm
E01001	for tube Ø 48.3mm	AISI 316	60 x 35mm

Item No.	Application	Material	Dimensions
E40571	flat back	AISI 316	M12 x 50
E40573	for tube Ø 42.4mm	AISI 316	M12 x 50
E40574	for tube Ø 48.3mm	AISI 316	M12 x 50

Item No.	Application	Material	Dimensions
E00950/H	for tube Ø 42.4mm	AISI 316	52 x 64mm
E00950/V	for tube Ø 42.4mm	AISI 316	52 x 64mm
For various sizes visit the website for more information...			

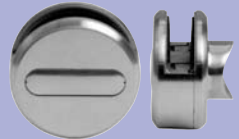
Glass Clamp

FOR 8mm, 10mm
10.76mm GLASS



Glass Clamp

FOR 12mm -12.76mm
GLASS



Glass Clamp

Ø 70mm MAX: 18mm



Glass Clamp

FOR 8mm -10mm GLASS





End Caps

Item No.	Application	Material	Dimensions
✓ E4090	for tube Ø 42.4mm	AISI 316	2.0 - 2.6
✓ E316	for tube Ø 42.4mm	AISI 304	2.0 - 2.6
✓ E4091	for tube Ø 48.3mm	AISI 316	2.0 - 2.6
E4092	for tube Ø 60.3mm	AISI 316	2.0 - 2.6

Item No.	Application	Material	Dimensions Ø
E465	for tube Ø 42.4mm	AISI 316	42.4 x 2mm
E466	for tube Ø 48.3mm	AISI 316	48.3 x 2mm

Item No.	Application	Material	Dimensions Ø
✓ E01151	for tube Ø 42.4mm x 2mm	AISI 304	42.4 x 8mm
✓ E01152	for tube Ø 48.3mm x 2mm	AISI 304	42.4 x 8mm

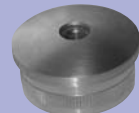
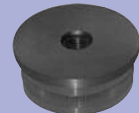
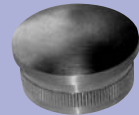
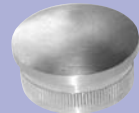
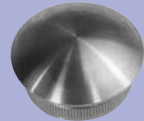
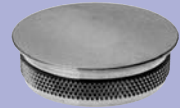
Item No.	Application	Material	Dimensions Ø
E0119	for tube Ø 42.4mm x 2mm	AISI 304	42.4 x 8mm
✓ E4120	for tube Ø 42.4mm x 2mm	AISI 316	

Item No.	Application	Material
E4100	for tube Ø 42.4mm x 2mm	AISI 316

Item No.	Application	Material
E4141	for tube Ø 42.4mm x 2mm	AISI 316
E4142	for tube Ø 48.3mm x 2mm	AISI 316

Item No.	Application	Material
E4110	for tube Ø 42.4mm x 2mm	AISI 316 M8

Item No.	Application	Material
✓ E4130	for tube Ø 42.4mm x 2mm	AISI 316 M8
✓ E4136	for tube Ø 48.3mm x 2mm	AISI 316 M8



Floor Base



Item No.	Application	Material	Dimensions
E4141	for tube Ø 42.4mm x 2mm	AISI 316	100 x 100 x 6mm
E4142	for tube Ø 48.3mm x 2mm	AISI 316	100 x 100 x 6mm

Floor Base



Item No.	Application	Material	Dimensions Ø
✓ E40310	for tube Ø 42.4mm x 2mm	AISI 316	100mm
E40310/26	for tube Ø 42.4mm x 2mm	AISI 316	100mm
✓ E40320	for tube Ø 48.3mm x 2mm	AISI 316	100mm
✓ E40320/26	for tube Ø 60.3mm x 2mm	AISI 316	100mm

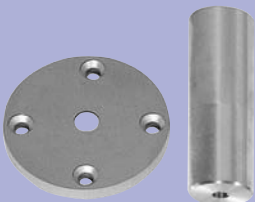
Floor Base



Item No.	Application	Material	Dimensions Ø
✓ E403	for tube Ø 42.4mm	AISI 316	100 x 85mm
✓ E403/483	for tube Ø 48.3mm x 2.6mm	AISI 316	100 x 85mm

Floor Base

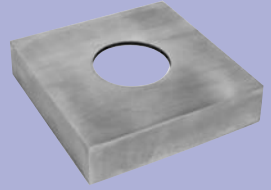
ALUMINIUM FOR GLUE



Item No.	Application	Material	Dimensions
E014	for tube Ø 42.4mm	Aluminium	38 x 100mm
E016	for E014	Aluminium	Ø 75 x 8mm

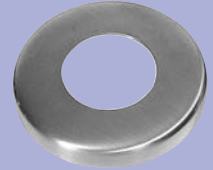
Item No.	Application	Material	Dimensions
E4078	for E404	AISI 316	102 x 102mm
E40783	for E404/483	AISI 316	125 x 125mm

Cover Plate



Item No.	Application	Material	Dimensions Ø
✓ E4072	for E404	AISI 316	105 x 25mm
✓ E4073	for E404/483	AISI 316	105 x 25mm
E019	for E404/483	AISI 304	82 x 15mm

Cover Plate



Item No.	Application	Material	Dimensions Ø
✓ E40820	for tube Ø 42.4mm	AISI 316	105 x 17mm
✓ E40830	for tube Ø 48.3mm	AISI 316	105 x 17mm

Cast Weldable Base



Item No.	Application	Material	Dimensions Ø
✓ E0700	for tube Ø 42.4mm	AISI 304	100 x 9mm
✓ E0710	for tube Ø 48.3mm	AISI 304	100 x 9mm

Profile Base



Rectangular Side Mounted Base



Item No.	Application	Material	Dimensions
✓ E406	for tube Ø 42.4 x 2mm	AISI 316	180 x 90mm
✓ E407	for tube Ø 48.3 x 2mm	AISI 316	180 x 90mm

Circular Side Mounted Base



Item No.	Application	Material	Dimensions Ø
✓ E40350	for tube Ø 42.4 x 2mm	AISI 316	100 x 10mm
✓ E40350/26	for tube Ø 42.4 x 2.6mm	AISI 316	100 x 10mm
✓ E40360	for tube Ø 48.3 x 2mm	AISI 316	100 x 10mm
✓ E40360/26	for tube Ø 48.3 x 2.6mm	AISI 316	100 x 10mm

Circular Side Mounted Base



Item No.	Application	Material	Dimensions Ø
E40300/424	for tube Ø 42.4mm	AISI 316	100 x 10mm

Side Mounted Base



Item No.	Application	Material	Dimensions Ø
E400	for tube Ø 42.4mm	AISI 316	75 x 8mm

Item No.	Application	Material	Dimensions
E4474/424	for tube \varnothing 42.4 x 2mm	AISI 304	75 x 57.5mm
E4474/483	for tube \varnothing 48.3 x 2mm	AISI 304	75 x 57.5mm

Item No.	Application	Material	Dimensions
E401	for tube \varnothing 42.4mm	AISI 316	100 x 100 x 6mm

Item No.	Application	Material	Dimensions \varnothing
E01	for tube \varnothing 42.4mm	AISI 304	20 x 15mm

Item No.	Application	Material	Dimensions \varnothing
E40590	flat back	AISI 316	27 x 43mm
E40592	for tube \varnothing 42.4mm	AISI 316	27 x 43mm

Flexible Handrail Support



Square Mounted Base

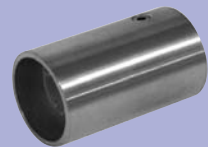


Distance Holder



Flat Back

FOR TUBE



Straight Saddle



Item No.	Application	Material	Dimensions
✓ E031	for tube Ø 42.4 x 2mm	AISI 304	5 x 65mm
✓ E031/S	for tube Ø 42.4 x 2mm	AISI 316	
✓ E031/483	for tube Ø 48.3 x 2mm	AISI 304	
✓ E031/48S	for tube Ø 48.3 x 2mm	AISI 316	

Adjustable Saddle



Item No.	Application	Material	Dimensions
✓ E030	for tube Ø 42.4 x 2mm	AISI 304	95 x 65mm
✓ E030/S	for tube Ø 42.4 x 2mm	AISI 316	
✓ E030/483	for tube Ø 48.3 x 2mm	AISI 304	
✓ E030/48S	for tube Ø 48.3 x 2mm	AISI 316	

Wall Support



Item No.	Application	Material	Dimensions Ø
✓ E0223	for tube Ø 42.4mm	AISI 304	42.4 x 30mm

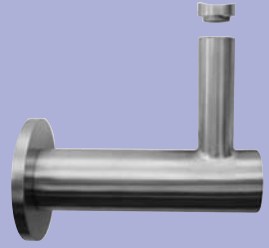
Wall Support



Item No.	Application	Material	Dimensions
✓ E45910	for tube Ø 42.4mm	AISI 316	84 x 100mm

Item No.	Application	Material	Dimensions Ø
E4586	for tube Ø 42.4 - 48.3mm	AISI 316	95 x 65mm

Wall Support



Item No.	Application	Material	Dimensions
E022	for tube Ø 42.4mm	AISI 304	95 x 95mm
E022/N	for tube Ø 42.4mm	AISI 316	95 x 95mm

Wall Support





Item No.	Application	Dimensions
✓ E4054	Glue	50ml

Item No.	Application	Dimensions
E4051	Cleaning Spray	500ml
E4052	Protection Spray	400ml
E4051/CL	Surface Cleaner	200ml

Item No.	Application	Dimensions
ES01	Glass Clamps	M8 x 20 DIN912
ES02	Handrail Holder	M8 x 20 DIN966
ES03	Round Bar Holder	M8 x 20 DIN7991



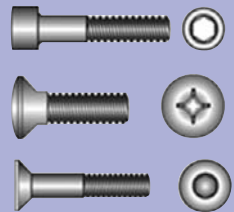
Aluminium Glue



Product Care



Fixings



Saddle Plate



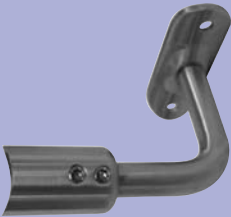
Item No.	Application	Material	Dimensions
E01198	for tube Ø 42.4 - 48.3mm	AISI 316	65 x 27mm
E01197	for tube Ø 42.4 - 48.3mm	AISI 304	65 x 27mm

90° Saddle Plate



Item No.	Application	Material
E01198/90	for tube Ø 42 - 48.3mm	AISI 316

Handrail Bracket



Item No.	Application	Material	Dimensions
E4583	flat back	AISI 316	76 x 65mm
E4583/424	for tube Ø 42.4mm	AISI 316	76 x 65mm

Flexible Handrail Bracket



Item No.	Application	Material
E0225	for tube Ø 42.4mm	AISI 316
E02251	flat back	AISI 316

Item No.	Application	Material	Dimensions Ø
E4582/424	for tube Ø 42.4 x 2mm	AISI 316	hole 42mm
E4582/483	for tube Ø 48.3 x 2mm	AISI 316	hole 42mm

Item No.	Application	Material	Dimensions
E4584	flat back	AISI 316	76 x 65mm
E4584/424	for tube Ø 42.4mm	AISI 316	76 x 65mm

Item No.	Application	Material	Dimensions Ø
E40651	flat back	AISI 316	22 x 30, 12.2mm hole
E40650	for tube Ø 42.4mm	AISI 316	22 x 30, 12.2mm hole

Item No.	Application	Material	Dimensions Ø
E0069	for tube Ø 42.4mm	AISI 304	22 x 30mm
✓ E4040	for tube Ø 42.4mm	AISI 316	22 x 30mm
✓ E4041	for tube Ø 48.3mm	AISI 316	22 x 30mm
✓ E4044	flat back	AISI 316	22 x 30mm

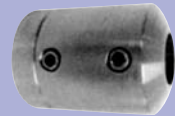
Handrail Bracket



Handrail Bracket



Crossbar Holder End



Crossbar Holder Intermediate

FOR Ø 12mm



90° Curved Elbow



Item No.	Application	Material	Dimensions
✓ E450	for tube Ø 42.4 x 2.0mm	AISI 316	A = 65mm
✓ E450/26	for tube Ø 42.4 x 2.6mm	AISI 316	A = 65mm
✓ E2002	for tube Ø 48.3 x 2.0mm	AISI 316	A = 73mm
✓ E2002/26	for tube Ø 48.3 x 2.6mm	AISI 316	A = 73mm

90° Mitred Elbow



Item No.	Application	Material	Dimensions
✓ E451	for tube Ø 42.4 x 2.0mm	AISI 316	A = 65mm
✓ E451/26	for tube Ø 42.4 x 2.6mm	AISI 316	A = 65mm
✓ E2012	for tube Ø 48.3 x 2.0mm	AISI 316	A = 67mm
✓ E2012/26	for tube Ø 48.3 x 2.6mm	AISI 316	A = 67mm

Adjustable Elbow



Item No.	Application	Material	Dimensions
✓ E446	for tube Ø 42.4 x 2.0mm	AISI 316	A=97mm B=22mm
E446/26	for tube Ø 42.4 x 2.6mm	AISI 316	A=97mm B=22mm
✓ E4462	for tube Ø 48.3 x 2.0mm	AISI 316	A=109mm B=25mm
E4462/26	for tube Ø 48.3 x 2.6mm	AISI 316	A=109mm B=25mm

Internal Connector



Item No.	Application	Material	Dimensions
✓ E455	for tube Ø 42.4 x 2.0mm	AISI 316	A=54mm B=25.5mm
✓ E455/26	for tube Ø 42.4 x 2.6mm	AISI 316	A=54mm B=25.5mm
✓ E2062	for tube Ø 48.3 x 2.0mm	AISI 316	A=55mm B=25.5mm
E2062/26	for tube Ø 48.3 x 2.6mm	AISI 316	A=55mm B=25.5mm



Item No.	Application	Material	Dimensions
✓ E4471	for tube Ø 42.4 x 2.0mm	AISI 316	90mm x 90mm
✓ E4471/26	for tube Ø 42.4 x 2.6mm	AISI 316	90mm x 90mm
✓ E4472	for tube Ø 48.3 x 2.0mm	AISI 316	103mm x 103mm
✓ E4472/26	for tube Ø 48.3 x 2.6mm	AISI 316	103mm x 103mm

Item No.	Application	Material	Dimensions
✓ E456	for tube Ø 42.4mm	AISI 316	84 x 20mm
✓ E2067	for tube Ø 48.3mm	AISI 316	94 x 23mm

Item No.	Application	Material
✓ E453	Flush Tee Connector to suit Ø 42.4 x 2.0mm	AISI 316
E453/26	Flush Tee Connector to suit Ø 42.4 x 2.6mm	AISI 316
✓ E2042	Flush Tee Connector to suit Ø 48.3 x 2.0mm	AISI 316
E2042/26	Flush Tee Connector to suit Ø 48.3 x 2.6mm	AISI 316



Flexible Elbow



Wall Flange



Flush Tee Connector



45° Mitred Elbow



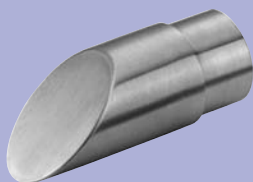
Item No.	Application	Material	Dimensions
✓ E2015	for tube Ø 42.4 x 2.0mm	AISI 316	A=50mm
✓ E2017	for tube Ø 48.3 x 2.0mm	AISI 316	A=55mm

Adaptor



Item No.	Application	Material	Dimensions
E454	for tube Ø 42.4 x 2.0mm	AISI 316	A=27mm B=20mm
E454/26	for tube Ø 42.4 x 2.6mm	AISI 316	A=27mm B=20mm
E2052	for tube Ø 48.3 x 2.0mm	AISI 316	A=31mm B=22mm

End Connector

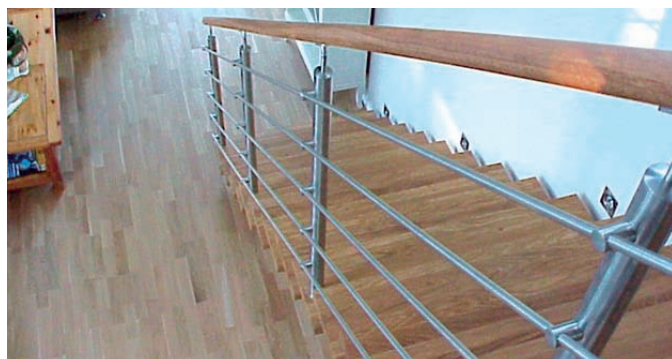


Item No.	Application	Material
E4842	for tube Ø 42.4 x 2.0mm	AISI 316
E4843	for tube Ø 42.4 x 2.6mm	AISI 316

Elbow with Wall Flange (radius)



Item No.	Application	Material	Dimensions
E4561	for tube Ø 42.4 x 2.0mm	AISI 316	A=84mm B=100mm
E4562	for tube Ø 42.4 x 2.6mm	AISI 316	A=94mm B=105mm

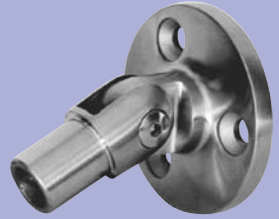


Item No.	Application	Material	Dimensions
E4483	for tube Ø 42.4 x 2.0mm	AISI 316	A=83mm B=60mm
E4484	for tube Ø 42.4 x 2.6mm	AISI 316	A=90mm B=69mm

Item No.	Application	Material	Dimensions
E4566	Ø 42.4 x 2.0mm	AISI 316	A=84mm B=65mm C=95mm
E4567	Ø 42.4 x 2.6mm	AISI 316	A=95mm B=67mm C=105mm



Adjustable Connector



Elbow with Wall Flange (mitred)



90° Radius



Item No.	Application	Material	Dimensions Ø
E600	for Ø 45mm	AISI 304	45mm

Woodline Glue



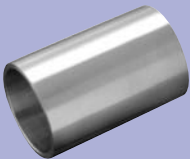
Item No.	Application	Material	Dimensions
2010	for E600/T	Glue	20g

90° Mitred



Item No.	Application	Material	Dimensions Ø
E601	for Ø 45mm	AISI 304	45mm

Connector



Item No.	Application	Material	Dimensions Ø
E603	for tube Ø 45mm	AISI 304	45mm

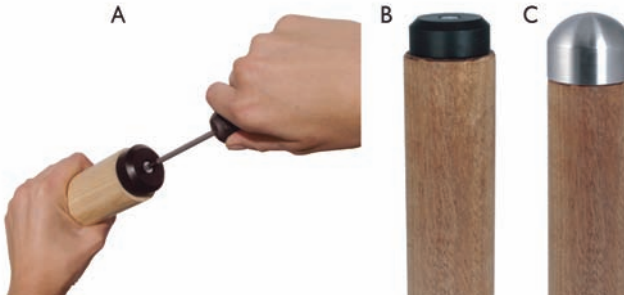
Flexible Elbow



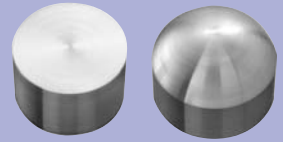
Item No.	Application	Material	Dimensions Ø
E604	for tube Ø 45mm	AISI 304	45mm

Item No.	Application	Material	Dimensions
E4260	for tube Ø 45mm	AISI 304	45mm
E4265	for tube Ø 45mm	AISI 304	45mm

Item No.	Application	Material	Dimensions Ø
E600/T	for tube Ø 45mm	Nylon	45mm



End Caps

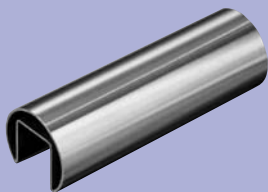


Nylon End Cap Connector

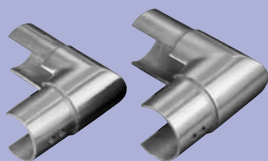


Tube

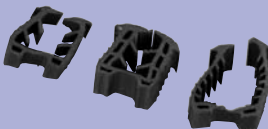
LGD: 6000mm



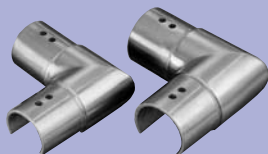
Vertical 90°



Rubber Inserts



Horizontal 90°

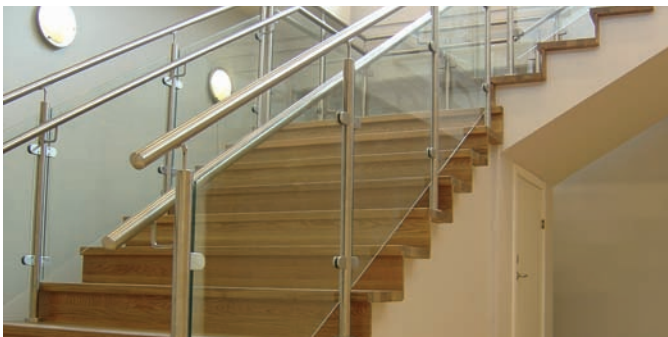


Item No.	Application	Material	Weight (kg)
✓ E1000424	for tube Ø 42.4mm	AISI 304	ca.11
✓ E1000483	for tube Ø 48.3mm	AISI 304	ca.13
✓ E1100424	for tube Ø 42.4mm	AISI 316	ca.11
✓ E1100483	for tube Ø 48.3mm	AISI 316	ca.13

Item No.	Application	Material	Weight (kg)
✓ E1500100	for tube Ø 42.4mm	AISI 316	0.362
✓ E1500110	for tube Ø 48.3mm	AISI 316	0.440

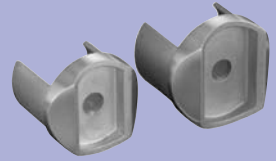
Item No.	Application
✓ E1999100	Insert to suit glass thickness 8 - 10.76mm for NR 42.4mm
✓ E1999200	Insert to suit glass thickness 12 - 16.76mm for NR 42.4mm
✓ E1999300	Insert to suit glass thickness 16.76 - 18mm for NR 42.4mm
✓ E1999400	Insert to suit glass thickness 8 - 13mm for NR 48.3mm
✓ E1999500	Insert to suit glass thickness 14 - 18mm for NR 48.3mm
✓ E1999600	Insert to suit glass thickness 18 - 20.76mm for NR 48.3mm

Item No.	Application	Material	Weight (kg)
✓ E1400100	for NR Ø 42.4mm	AISI 316	0.286
✓ E1400110	for NR Ø 48.3mm	AISI 316	0.400



Item No.	Application	Material	Weight (kg)
E1300100	Adaptor for NR 42.4mm	AISI 316	0.112
E1300110	Adaptor for NR 48.3mm	AISI 316	0.140

Adaptor



Item No.	Application	Material	Weight (kg)
✓ E1200100	for NR 42.4mm	AISI 316	0.128
✓ E1200110	for NR 48.3mm	AISI 316	0.176

Straight Connector



Item No.	Application	Material	Weight (kg)
✓ E1100100	NR 42.4mm	AISI 316	0.098
✓ E1100110	NR 48.3mm	AISI 316	0.116

End Cap





BLACKBURNS
METALS LIMITED

Aluminium, Stainless Steel and non-ferrous alloys...

Blackburns is one of Europe's leading suppliers of Aluminium, Stainless Steel and other semi finished non-ferrous products. Its name is synonymous with high quality and service levels throughout industry, with a reputation for innovative products and supply partnerships.

With a strategically placed network of Sales and Service Centres, Blackburns provides immediate stock availability and local service to a wide range of industry and market sectors, with what is probably the most comprehensive product range and processing facilities in the UK. Local stock is enhanced by a central facility which carries over 10,000 tonnes of material in over 200,000 square feet, all of which is available on a daily basis to each Service Centre throughout the UK.

Focused on customer requirements, a significant investment has been made in processing and fabricating facilities, allowing Blackburns to supply material closer to final form, providing the option of bespoke sizes and finishes previously unavailable, creating a real opportunity of a 'one stop shop'.

Blackburns remains responsive to the constant fluctuation in demand faced by its customers, with the ability to supply most parts of the UK within 24 hours and globally through its Export Department, Blackburns are committed to building long term cost saving relationships with its customers.

Contact your **local** Blackburns today...

(see back cover for locations and contact details)

Blackburns Products & Services

ALUMINIUM

- Sheet
- Patterned Sheet
- Plate
- Coils & Blanks
- Circles
- Shate
- Special Extrusions
- Angles
- Tee & Zed Sections
- Channels
- Flat Bar
- Round Bar
- Square Bar
- Welding Wire
- Round Tube
- Rectangular Tube
- Gutters & Cope
- Fluted Edges & Nosings
- Wallboard Sections

STAINLESS STEEL

- Sheet
- Treadplate
- Plate
- Coil
- Section
- Pipe
- Circle Polished
- Flanges
- Seamless Tube
- Hygienic Tube & Fittings
- High Purity Tube & Fittings
- Screwed Fittings
- Socket Weld Fittings
- Structural & Decorative Tube

BRASS

- Rod
- Hexagon
- Angle
- Square
- Tube
- Plate
- Flat Bar
- Sheet

BRONZE

- Drawn Rod
- Rod
- Hexagon
- Hollow Bar
- Plate
- Sheet

COPPER

- Tube
- Flat Bar
- Sheet
- Plate
- Round Bar

COIL PROCESSING

- Aluminium Slit Coil
- Stainless Steel Slit Coil
- Aluminium Precision Blanks
- Stainless Steel Precision Blanks

PLATE

- Aluminium Plate 5083
- Aluminium Plate 6082
- Alumecc 79-89-99
- MIC-6

ARCHITECTURAL PRODUCTS / SURFACE DESIGN

- Composite Panels
- Anodised Sheet
- Patterned Sheet
- Handrail System

FABRICATION PROCESSING

- Plastic Coating
- Guillotining
- Bench Tooling
- Bending
- Slitting
- Shearing
- Sawing
- Tapping & Drilling
- Blanking
- Mitrting
- Punching
- Pressing

SIGNS & SIGN COMPONENTS

- Achromed & Painted Sheet
- Aluminium Circles
- Aluminium Triangles
- Aluminium Rails
- Aluminium Tee Sections
- Aluminium Round Posts
- Aluminium Square Posts
- Steel Round Posts
- Steel Square Posts
- Plastisol Coated Sheet
- Planking Systems
- Trays
- Clip Sections
- Composite Panels
- Stainless Steel Banding Systems

MARINE PRODUCTS

- Marine Aluminium
- Marine Stainless Steel
- BCP Composite
- Yellow metals



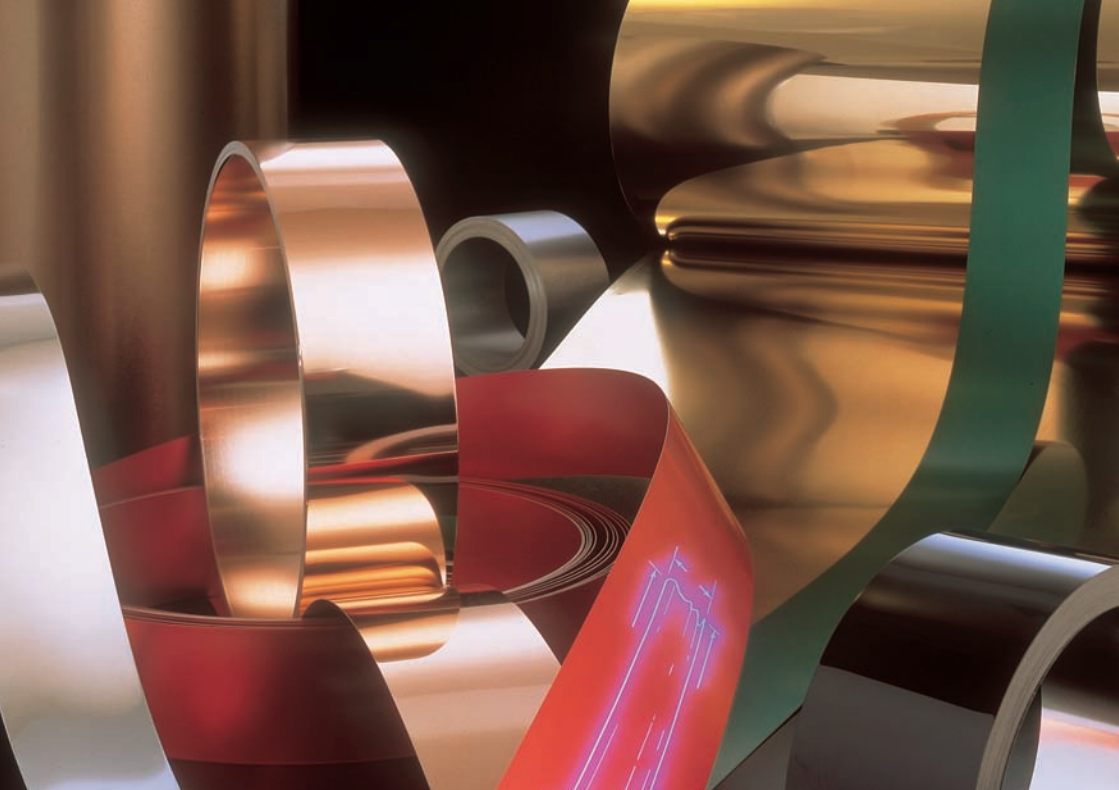
decp061|w

©2011 BLACKBURNS METALS LTD

All copyrights are reserved and no part of this publication may be reproduced, transmitted or stored in any form or by any means without the prior permission of Blackburns Metals Limited.

DISCLAIMER

The information contained herein is for guidance only. No liability will be accepted by the Company.



BEDFORD

Edison Road
Elms Farm Industrial Estate
Bedford MK41 0HU
t. 01234 684 100
bedford@blackburnsmetals.com

EDENBRIDGE

Commerce Way
Edenbridge
Kent TN8 6ED
t. 01732 582 700
edenbridge@blackburnsmetals.com

LEEDS

Units 3 & 4
Benyon Park
Leeds LS12 6DP
t. 0113 386 3280
leeds@blackburnsmetals.com

READING

9-10 Stadium Way, Reading
Berkshire RG30 6BX
t. 0118 945 5542
reading@blackburnsmetals.com

BRIDGEND

Coegnant Close
Brackla Industrial Estate
Bridgend
Mid Glamorgan CF31 2AH
t. 01656 683 900
bridgend@blackburnsmetals.com

HAYDOCK

Unit 6, Wilcock Road
Old Boston Trading Estate
Haydock, St. Helens
Merseyside WA11 9SR
t. 01942 758 800
haydock@blackburnsmetals.com

NORWICH

13 Concorde Road
Norwich
Norfolk
NR6 6BJ
t. 01603 243 900
norwich@blackburnsmetals.com

PLATE / COIL CENTRE

Building 43, Third Avenue
The Pensnett Estate
Kingswinford DY6 7UU
t. 01384 282 360 (plate)
t. 01384 282 350 (coil)
plate@blackburnsmetals.com
coil@blackburnsmetals.com

BRISTOL

St. Andrews Trading Estate
Third Way, Avonmouth
Bristol BS11 9YE
t. 0117 948 2600
bristol@blackburnsmetals.com

KINGSWINFORD

Building 31, Second Avenue
The Pensnett Estate
Kingswinford DY6 7UE
t. 01384 282 630
kingswinford@blackburnsmetals.com

PLYMOUTH

Unit K1, Eagle Road
Langage Business Park
Plymouth, Devon PL7 5JY
t. 01752 612 400
plymouth@blackburnsmetals.com

MARKETING AND EXPORT

Building 38, Second Avenue
The Pensnett Estate
Kingswinford DY6 7UN
t. 01384 276 419
marketing@blackburnsmetals.com

